

Jaguar - entrance mat

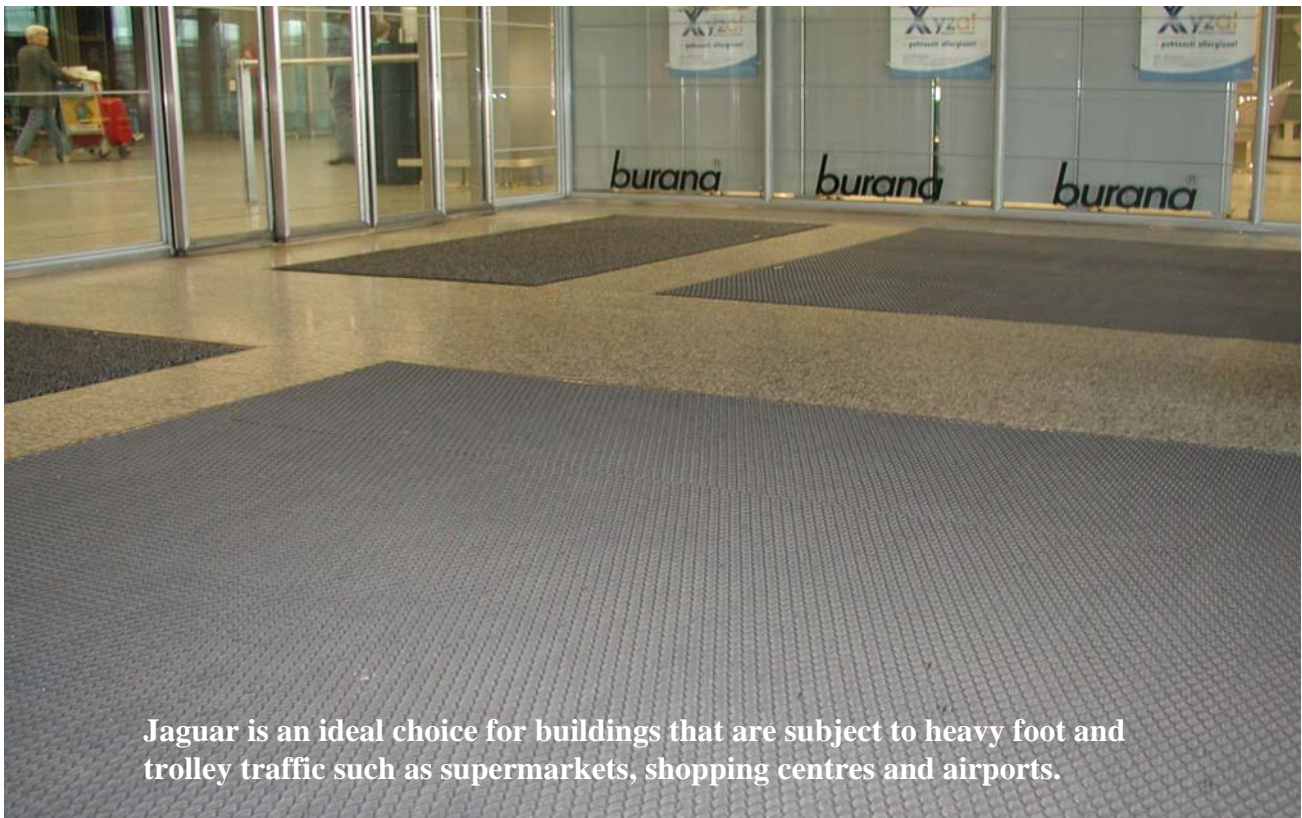
MUOVIHAKA OY



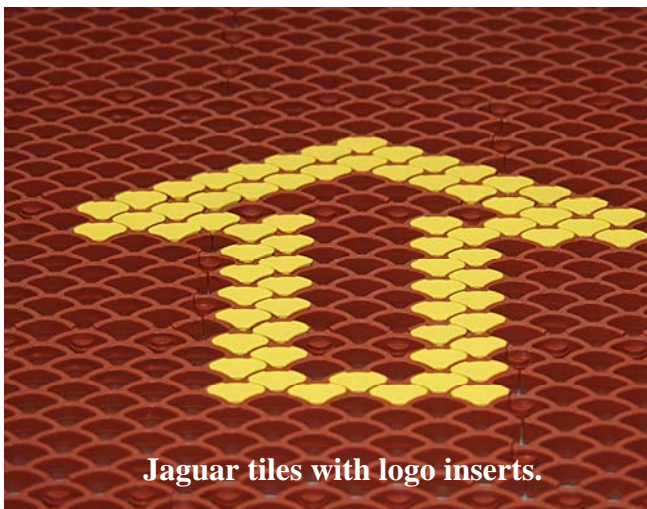
Jaguar is heavy duty primary entrance mat for all high and extreme traffic conditions including airports, subway stations, shopping centres, public buildings etc.

Jaguar is very durable interlocking modular mat for both internal and external applications. It has exceptional performance for heavy foot and trolley traffic.

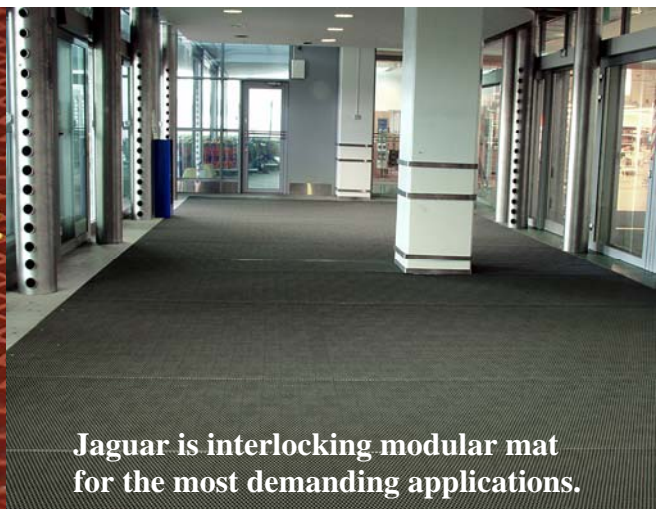
Jaguar has open construction and slip resistant surface. A functional Jaguar entrance mat stops dirt, sand and debris in the entrance area. Jaguar's surface scrapes away undershoe dirt while letting debris fall through its open grid.



Jaguar is an ideal choice for buildings that are subject to heavy foot and trolley traffic such as supermarkets, shopping centres and airports.

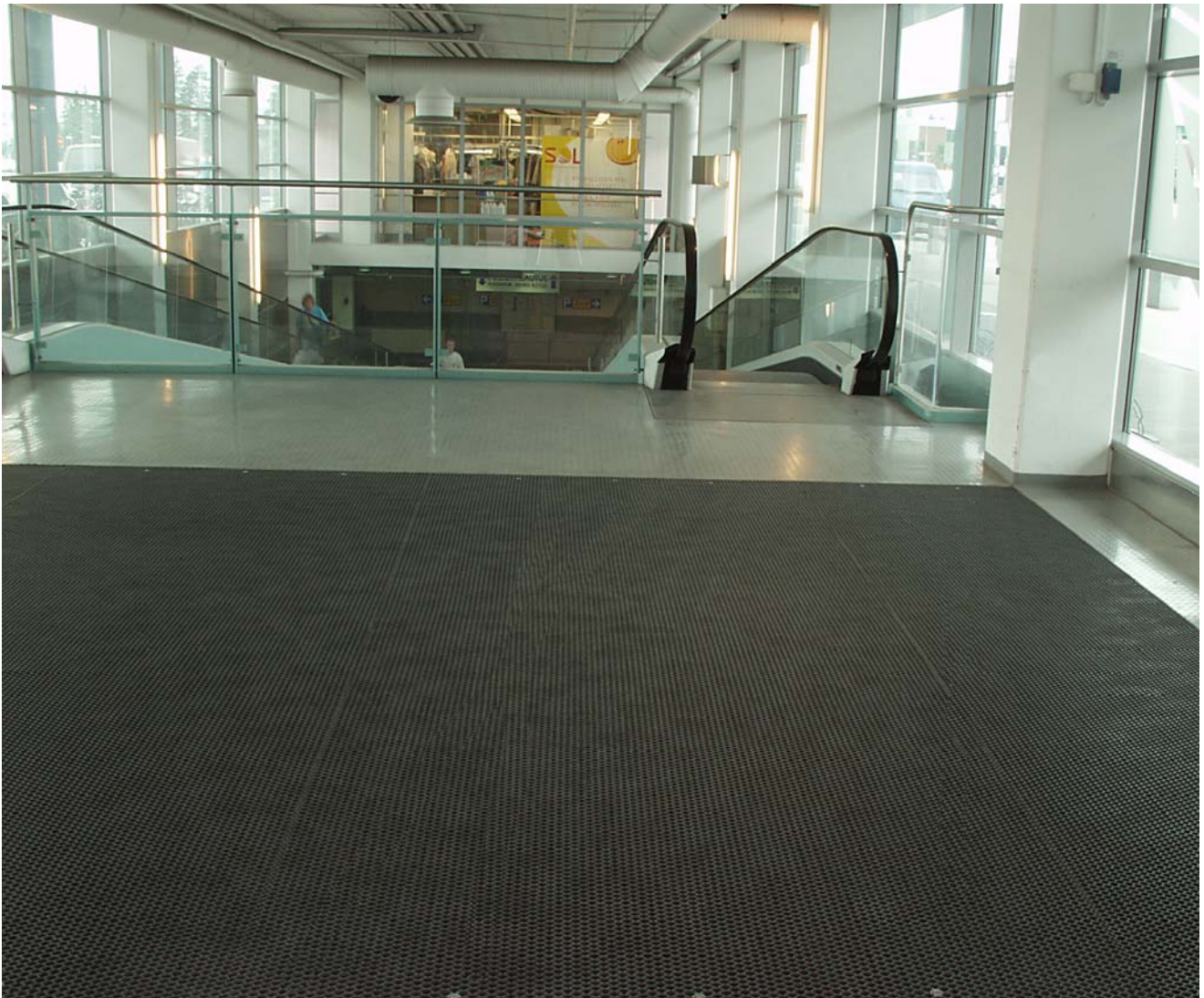


Jaguar tiles with logo inserts.

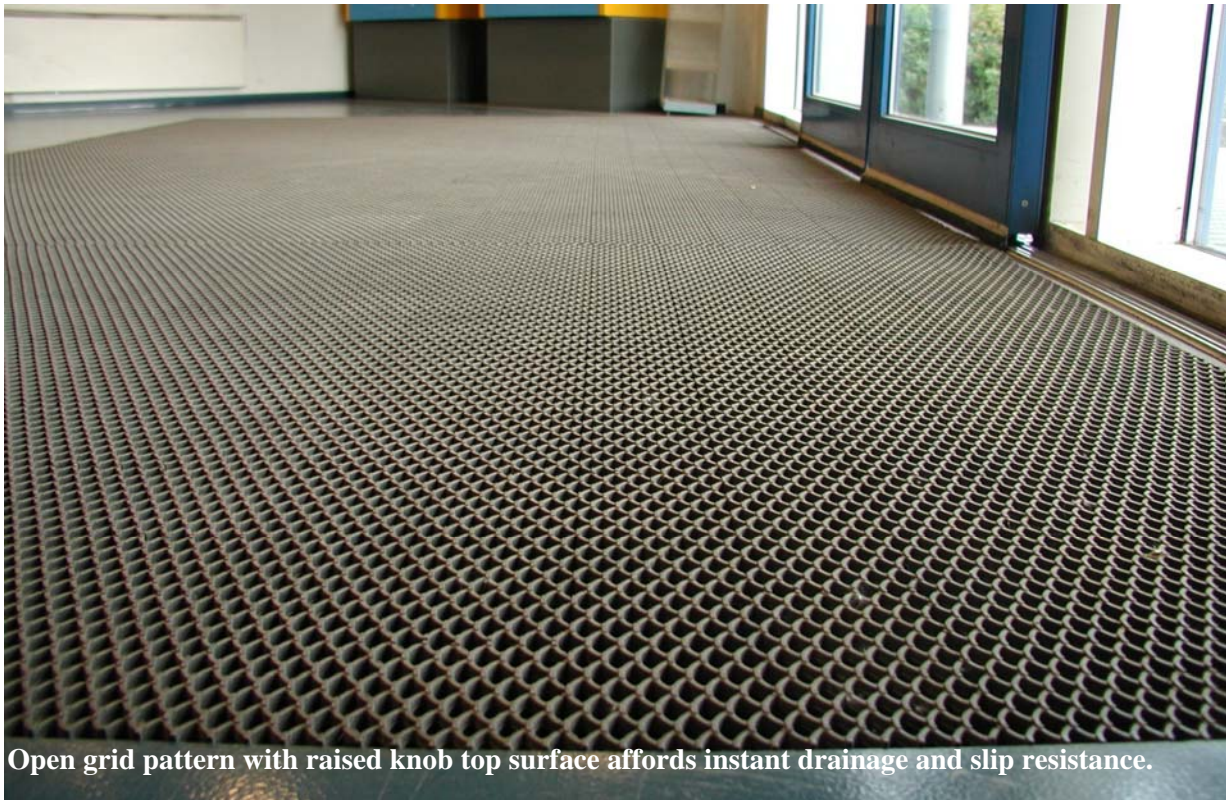


Jaguar is interlocking modular mat for the most demanding applications.

Jaguar - entrance mat



Jaguar - entrance mat



Excellent slip resistance and maximum drainage
Jaguar has slip resistant surface pattern and it offers also an exceptional drainage. Open grid construction allows water to pass through the mat, providing safe and dry surface and reducing slip hazards.

Interlocking tiles
Interlocking modular tiles allow you to create an entrance mat of any length and width. Tiles are very easy to cut to size and shape. Jaguar tiles can be installed in minutes, without the use of special tools.

Easy maintenance
Jaguar entrance mat is inexpensive to clean by vacuum cleaning or hosing down. Lightweight Jaguar matting is easy to roll up for maintenance. Dirt that falls through the mat can be simply vacuum cleaned from the floor underneath.

Accessories:
Jaguar soft edging 12 mm x 40 cm
Jaguar plastic edging 16 mm x 300 cm
Jaguar alu edging 16/20 mm x 300 cm
Jaguar logo inserts 12, 16 and 20 mm
Jaguar anchors 12, 16 and 20 mm

SPECIFICATIONS: JAGUAR TILES	
Material:	PVC/NBR, UV-shielded. Resists most chemicals and oils. 100 % recyclable.
Tile size:	400 x 100 mm
Packaging:	25 tiles / box (approx. 1 m ²)
Height:	12 mm, 16 mm, 20 mm and 25 mm
Weight:	4.9 kg/m ² 7.1 kg/m ² 9.0 kg/m ² 11.3 kg/m ²
Temperature resistance:	-35°C - +70°C
Standard colours:	Black, graphite, dark grey, light grey, terracotta, blue and green
Fire resistance:	B2 (DIN 4102-1)



Standard colours: graphite, blue, dark grey, terracotta, light grey, green and black

Jaguar - entrance mat

Accessories:



Jaguar edging 12 mm

Bevelled surface of Jaguar 12 mm edging reduces tripping hazards. Low edging allows foot and wheel traffic to traverse easily.

Material: UV-resistant vinyl/NBR

Size: 4 cm x 40 cm

Height: 12 mm

Weight: 100 g / pc

Colour: grey



Plastic edging 16 mm

Jaguar plastic edging is specially designed for surface mounted applications on finished floor surfaces and for indoor and outdoor conditions.

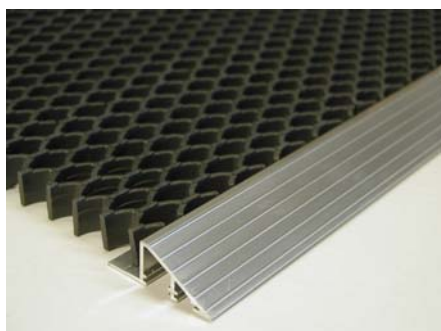
Material: UV-resistant PP/rubber

Length: 300 cm

Height: 16 mm

Weight: 290 g / m

Colour: grey



Jaguar aluminium edging 16/20 mm

The bevelled surface of the edging minimizes the possibility of tripping and allows use of wheeled carts. It withstands heavy loads and is suitable for heavy wheeled traffic.

Material: anodised aluminium.

Height: 18 mm

Length: 300 cm

Weight: 460 g/m



Jaguar logo inserts

Muovihaka Oy has developed Jaguar logo inserts to emboss logo or text directly onto Jaguar mat.

With Jaguar logo inserts you can design logo or text to give your Jaguar entrance mat unique look.

Material: ABS

Height: 12, 16 and 20 mm

Colours: black, red, blue, green and yellow



Jaguar anchors

Jaguar installation anchors are used to secure sections of mats to floor. If there is a risk that entrance mats might move due to heavy foot or trolley traffic, Jaguar installation anchors prevent mats from moving and sliding around.

Material: nylon

Height: 12, 16 and 20 mm

Colours: black and grey

Ø 15 mm