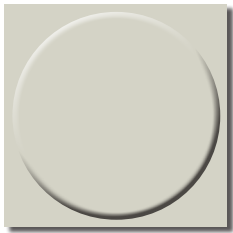


Rubber Stud Flooring GN

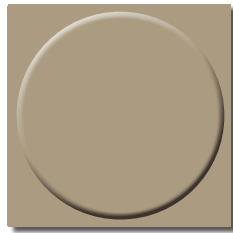
Smooth Large Round Stud

Premium quality rubber tile flooring for heavy traffic.

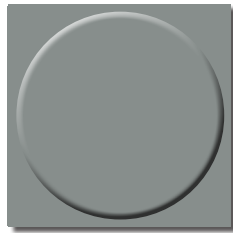
Underside: Smooth, sanded **Material:** Rubber, flame retardant **Fire behaviour:** B_f-s1



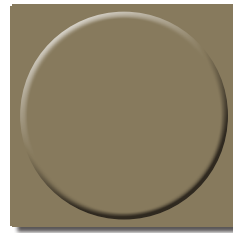
light grey (RAL 7035)



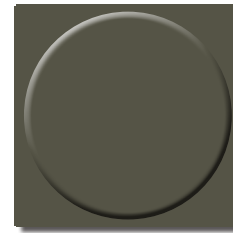
pebble grey (RAL 7032)



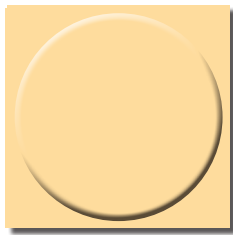
silver grey (RAL 7001)



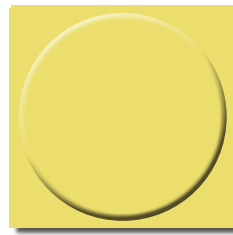
traffic grey (RAL 7042)



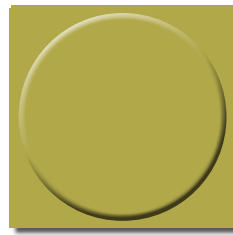
basalt grey (RAL 7012)



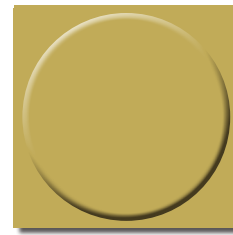
oyster white (RAL 1013)



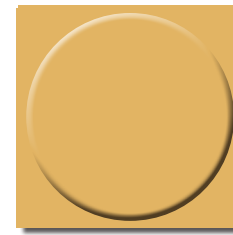
green beige (RAL 1000)



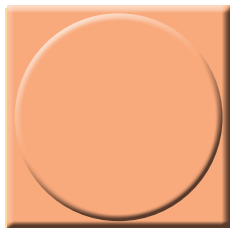
sand yellow (RAL 1002)



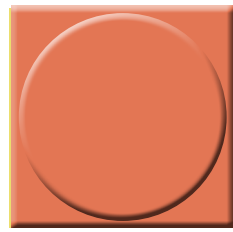
ivory (RAL 1014)



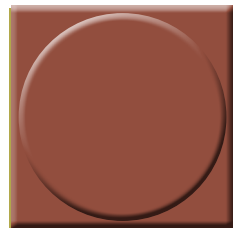
beige (RAL 1001)



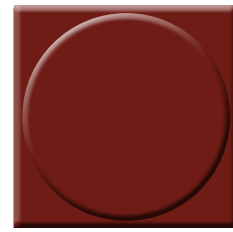
beige red (RAL 3012)



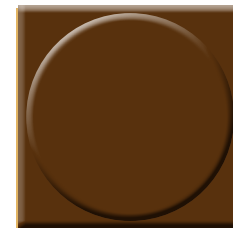
salmon red (RAL 3022)



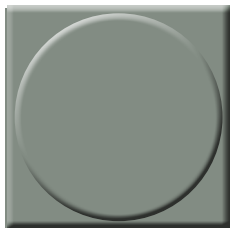
copper brown (RAL 8004)



oxide red (RAL 3009)



beige brown (RAL 8024)



pastel turquoise (RAL 6034)



pastel blue (RAL 5024)



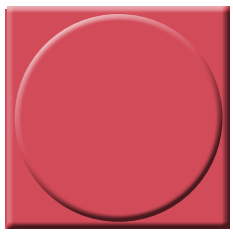
dove blue (RAL 5014)



sky blue (RAL 5015)



cobalt blue (RAL 5013)



antique red (RAL 3014)



flame red (RAL 3000)



pale green (RAL 6021)



may green (RAL 6017)



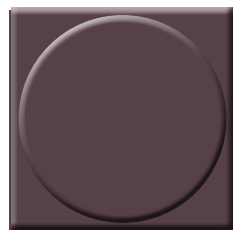
turquoise green (RAL 6016)



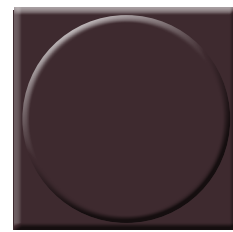
ocean blue (RAL 5020)



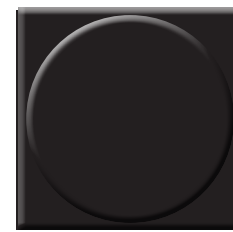
blue lilac (RAL 4005)



pastel violet (RAL 4009)



purple violet (RAL 5000)



signal black (RAL 9004)

